

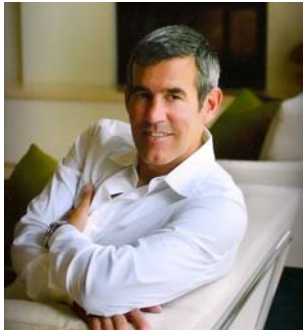
BUSINESS MONTHLY



Chamber of Commerce

FEBRUARY 2012

FEBRUARY MEMBERSHIP MEETING



SPEAKER: BILL DONIUS

TOPIC: HOW TO UNLOCK YOUR INNER GENIUS TO TAP INTO CREATIVITY AND INTUITION

Thursday, February 16, 2012
Spazio Westport
12031 Lackland Road
St. Louis MO 63146

11:15 a.m. Registration & Networking
11:45 - 1:00 p.m. Lunch & Program

See registration form in newsletter.

	Sun	Mon	Tue	Wed	Thu	Fri	Sat
FEBRUARY				1	2	3	4
	5	6	7	8	9	10	11
	12	13	14	15	16	17	18
	19	20	21	22	23	24	25
	26	27	28	29			

- Feb 10 Coffee Connection**
Doctors Express
747 N. New Ballas Road – Creve Coeur
8:00 – 9:00 a.m.
- Feb 16 Membership Luncheon 11:15 a.m. – 1:00 p.m.**
Spazio at Westport
12031 Lackland Road – 63146
(see enclosed registration form)
- Feb 24 Academy Awards Gala/Auction**
Spazio at Westport
12031 Lackland Road - 63146
6:30 – 10:00 p.m. – Dinner and Open Premium Bar
(see registration flyer in newsletter)
- Mar 27 Business Expo 4:00 – 6:00 p.m.**
Jewish Community Center – Arts & Education Bldg.
2 Millstone Campus Drive – 63146
(see enclosed registration form)



PLEASE LIKE US ON FACEBOOK



Chamber Of Commerce

Thanks for your support!

2012 PARTNERSHIP PROGRAM SPONSOR





Photo courtesy of McCarty Photography

2012 Chamber Board of Directors

Officers

- President**
Jeanna Woods, Delmar Gardens of Creve Coeur
- President Elect**
Phyllis Messerla, AMG Corporate Offices
- Vice President, Education**
Shelly Dunsmoor, Drury Hotels
- Vice President, Events**
Bob Gassner, Visiting Nurse Association
- Vice President, Government**
Dave Book, Murphy Company
- Vice President, Legislation**
Teresa Crossland, Monsanto
- Vice President, Member Services**
Jodi Meracle, RAI Insurance Group
- Treasurer**
Kelli Kimack, M&I Bank
- Assistant Treasurer**
Kristen Johnson, Commerce Bank
- Legal Counsel**
Steve Kling, Jenkins & Kling PC

Directors

- Jennifer Arvin, Barnes-Jewish West County Hospital
- Michelle Banducci, Banducci Enterprises/McDonald's
- Kathy Franklin, Select Personnel
- Dr. Paul Hyland, Committed to Health Chiropractic Center
- Ed Lindner, Kriegshauser West Mortuary
- Barb Meyer, Mercy Health
- David Peterson, Payroll 1
- Chris Pickel, AT&T
- Tina Powell, Vantage Credit Union
- Kevin Rejent, The Rejent Law Firm
- Gene Rovak, Professional Engineer
- Janet Reuther Schopp, Reuther Automotive Group
- Ryan Schratz, Pulaski Bank
- Larry Tessler, Tessler Promotions.
- Joe Winkler, Bristol Seafood Grill
- Director Emeritus** – Bill Wyne, Wyne & Merritt PC

Staff

- Nancy Gray (Executive Vice President)
- Barb Gerstenkorn (Finance Director)
- Kelly Nelson (Membership Director)
- Jennifer Stringer (Media Specialist)

Creve Coeur - Olivette Chamber of Commerce
 10950 Olive Blvd., Suite 101
 Creve Coeur MO 63141
 314-569-3536
 314-569-3073 (fax)
www.ccochamber.com

Mission: To be a strong advocate for business

PRESIDENT'S MESSAGE

By Jeanna Woods



The end of January brings higher gasoline and stamp prices. As we look forward to spring, I remain optimistic and encouraged as I meet new Chamber members. Staying connected will ensure results for you and your business. This month is the annual Chamber Auction. There will be plenty of time to network with others as you peruse the great auction items. Besides having a great time and raising money for the Chamber, we will be honoring our firefighters and policemen in the Creve Coeur/Olivette area. Other upcoming events your Chamber Board members are working on include hosting a candidate forum prior to the April Creve Coeur Mayoral election. You definitely won't want to miss this event. Watch for emails and upcoming newsletters for up-to-date information on the candidate forum. In closing, have a fabulous February!

Residential · Commercial



10 Year Labor Warranty

Ask About our
"Leak Proof Guarantee"

**CALL TODAY FOR
 A FREE ESTIMATE!**



314.932.1042
www.tessonroofing.com

Tesson Roofing & Exteriors
 752 Lemay Ferry Road
 Saint Louis, MO 63125

"a referral is the finest compliment we can receive..."

What we offer:

**RESIDENTIAL ROOFING • COMMERCIAL ROOFING
 SIDING • GUTTERS • SOFFIT & FASCIA**

- * Complete roofing and roofing services
- * Storm, hail, and wind damage repair
- * Fast turn-around times
- * We exceed manufacturer's specifications
- * FREE inspection and damage assessment
- * Professional crews
- * 10-Year labor warranty
- * Meticulous clean up after job

MEMBER GALLERY PHOTO



Gert Booher from Video Vantages.



Russell Weber Awarded with Certified Risk Manager Designation

Russell J. Weber of O'Connor Insurance was awarded a certificate of achievement recognizing five consecutive years of active affiliation with Certified Risk Managers International. The CRM designation requires 100 hours of education, five comprehensive examinations, and an annual continuing education update in order to maintain the designation.

Russell will be happy to help you with your insurance needs. He may be reached at 314-434-0038.



Meracle's Membership Memo

Happy 2012 everyone! As VP of Membership I would like to extend a warm welcome to our new Membership Director, Kelly Nelson, who will begin with the Chamber on February 1st. We are very excited to have her as a part of the Chamber family and look forward to her contributions in membership this year and many more to come. Welcome Kelly!

In challenging economic times, it is more important than ever to make new business contacts and develop referral relationships. So, our major focus this year is to build our membership and expand our opportunities for these types of relationships.

Throughout the year you will be hearing from me and the Chamber staff on ways that we are working to increase membership and meet our goals for 2012. To do this, we will also need the support of each member.

Starting at our February Membership Luncheon, Kelly or I will be sitting near the entrance asking each member for names of two people or businesses they might know who aren't members of the Chamber. Those people or businesses may have shown interest in our Chamber, perhaps been a previous member, attended an event as a guest, or are simply wanting to get involved with networking and growing their business. This will provide us interested people and businesses to call on and let them know how investing in a Chamber membership can be beneficial to their businesses.

Our goal this year is to be successful in growing our membership and uniting our great community and in order to do that we need you—our members. So please, get involved, attend events and get someone to join. Because the larger our Chamber family is the more opportunities there are for you as a member to have a larger network of people and in turn grow your business. I look forward to seeing all of you at the upcoming luncheons and future events! Thank you for your continued support of our wonderful Chamber!

O'CONNOR
INSURANCE



Auto • Home • Business • Life • Health

• Condo & Community Association Specialists •

12101 Olive Boulevard, Creve Coeur, MO 63141

314-434-0038

www.oconnor-ins.com



THE 14TH ANNUAL BUSINESS EXPO

TUESDAY, MARCH 27, 2012

4:00-6:30 p.m.

Jewish Community Center
2 Millstone Campus Drive
St. Louis MO 63146

ATTENDANCE IS FREE

NEW MEMBER PROFILES



California Pizza Kitchen

Amy Kunes (Casey Sullivan pictured at left)
10590 Old Olive Street Road
Creve Coeur MO 63141
Phone: 314-567-7835
e-mail: r_crc@cpk.com

California Pizza Kitchen in Creve Coeur offers a full range of hearth-baked pizzas, distinctive pastas, salads, soups, sandwiches, appetizers and desserts, to St. Louis residents. Serving Creve Coeur for more than 10 years, California Pizza Kitchen enjoys being a part of the local community by supporting non-profit organizations with fundraiser program. Offering dine-in, take-out, catering, on-line ordering, delivery and an award-winning CPKids Menu.

H&R Block

Gerald Kill
Bellerive Plaza
12734 Olive Blvd.
Creve Coeur, MO 63141
Phone: 314-434-3084
Fax: 314-434-1272
E-mail: gerald.kill@tax.hrblock.com
Website: hrblock.com

H&R Block is a national company with over 50 years experience in tax preparation. Staff members average over 8 years experience and over 450 hours of training. H&R Block provides a Maximum Refund Guarantee, free e-file, occupation-based tax advice and audit assistance. Second Look Service is available to review tax returns from another preparer to verify accuracy and maximum savings. H&R will do everything they can to save you money on your taxes. Call for an appointment.



Infinite Returns, LLC

Carlton & Nancy Linder
9427 Cimarron Ct
St. Louis, MO 63132
Phone: 314-616-2831
Fax: 314-989-0735
E-mail: carlton@infinitereturns.net
Website: www.infinitereturns.net

Infinite Returns, LLC buys and sells income producing apartment communities using cash from investors. Investors in turn receive stable, consistent returns secured by income producing real estate. Investors are able to leverage Infinite Returns success and knowledge as real estate professionals to receive all the benefits to apartment community investing through a completely hands off approach. Ask about their CCO Chamber member benefits. Infinite Returns, LLC – put your money to work with Infinite Returns!



SmithAmundsen, LLC

Brad Goss (Tim Muehliesen (left) and AJ Schrage pictured)
12312 Olive Blvd., Ste. 100
St. Louis, MO 63141
Phone: 314-275-1802
Fax: 314-275-1803
E-mail: bgoss@salawus.com
Website: www.salawus.com

SmithAmundsen is a 130 lawyer firm specializing in various areas of the law. Legal matters are business problems to be solved and SmithAmundsen has developed a comprehensive understanding of the enterprises its clients operate. SmithAmundsen's goal is to become its clients primary source for legal services and business advice, and be the lawyers you turn to when you need to "get it done and done right." It understands the importance of a "bottom line" analysis. This attention to the ramifications of litigation and its effect on enterprise outcomes helps to provide clients with the advice needed to make appropriate decisions.



Yvonne Wesa, RE/MAX Results

Re/Max Broker – Associate
11819 Manchester Road
Des Peres, MO 63131
Phone: 314-363-4170
E-mail: yvonne@ymwrealestate.com
Website: ywesa@homestlouis.com

Yvonne Wesa sells residential real estate, works with both sellers and buyers and is certified as a short sales specialist. Her certifications include GRI, CDPE, SFR, ABR and SRS. She offers first-time homebuyer education and will spend the necessary time with clients explaining the current market.



2011 ANNIVERSARIES

Thank you to all the businesses that renewed their memberships in 2011. Here are the companies that hit an anniversary milestone:

25 Years

Delmar Gardens of Creve Coeur
Covenant Theological Seminary

20 Years

Bianco Properties
Bonhomme Village Apartment Homes
City of Olivette
Edgewater Court Apartments
Gannett Offset - St. Louis
Mengwasser Martin Lall & Clark P.C.
Murphy Company

15 Years

Allegra Marketing Print Mail
Blives Consulting, LLC
Parkway Baptist Church

10 Years

Banducci Enterprises/McDonald's
First Community Credit Union

5 Years

Allied Waste
American Family Insurance - Steve Cook
Boulder Springs Apartments
Committed to Health Chiropractic Center
CPR -N- MORE
FedEx Office - Olivette
First National Bank of St. Louis
Heather Ridge Apartments
Isle of Capri Casinos
Keat Properties, LLC
Kings Landing
Noodles & Company
Paramount Mortgage Company
Ronald McDonald House Charities
Sam's Club - West County
US Bank
Colleen Wasinger, St. Louis County Council

Official Chamber Photographer

McCarty Photography, Inc.

8901 St. Charles Rock Road
St. Louis, MO 63114
(314) 428-5090
11200 Olive Blvd.
Creve Coeur, MO 63141
(314) 432-1221

Publicity • Portraits • Weddings

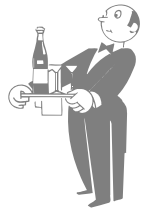
WELCOME NEW MEMBERS!

H&R Block

Gerald Kill
12734 Olive Blvd.
Creve Coeur, MO 63141
Phone: (314) 434-3084 – Fax: (314) 434-1272
Website: www.hrblock.com
Business: Tax Preparation

Hair Saloon For Men

Mary Ann Matchett
12794 Olive Blvd.
Creve Coeur, MO 63141
Phone: 314-576-0414 – Fax: 314-576-0410
Website: www.hairsaloon.com
Business: Hair Care For Men



Infinite Returns, LLC

Carlton & Nancy Linder
9427 Cimarron Ct.
St. Louis, MO 63132
Phone: (314) 616-2831 – Fax: (314) 989-0735
Website: www.infinitereturns.net
Business: Real Estate Investments

Microgrid Energy

Rick Hunter and Marc Lopata
14 S. Central Ave., Ste. 200
St. Louis, MO 63105
Phone: (314) 265-6143
Website: www.microgridenergy.com
Business: Solar/E.V. Charging



THANKS TO THE FOLLOWING BUSINESSES FOR RENEWING THEIR MEMBERSHIPS IN JANUARY:

American Carnival Mart/Partyland/Good Times – 17 years
American Eagle Credit Union – 1 year
Bonhomme Village Apartment Homes – 20 years
City of Olivette – 21 years
Creve Coeur Fire Protection District – 27 years
Creve Coeur Patch – 1 year
Days Inn – 5 years
Doctors Express – 1 year
Edward Jones Family YMCA – 7 years
Egiserve Insurance - 4 years
First Community Credit Union – 10 years
Hutkin Development Company – 8 years
Kriegshauser West Mortuary – 17 years
Mark Lemp Footwear/Mosinger-Cohn, Inc. – 3 years
MassageLuXe – 2 years
McAlister's Deli – 4 years
Noodles & Company – 6 years
Parkway School District – 9 years
Regus – 18 years
Signature Medical Group – 2 years
St. Louis JCC - Staenberg Family Complex – 2 years
The Rejent Firm, LLC – 1 year
US Bank – 6 years
Verizon Wireless – 7 years



**MARK YOUR CALENDARS FOR THE
ACADEMY AWARDS
AUCTION & AWARDS GALA**

**Friday, February 24, 2012
Spazio Westport
12031 Lackland Road
St. Louis MO 63146
6:30 – 10:00 p.m.**

**Guarding Against Carbon Monoxide Exposure
by Jason McIntosh, Deputy Fire Marshal
Creve Coeur Fire Protection District**

The colder months often bring an increase risk of carbon monoxide poisoning. Carbon monoxide (CO) is an odorless, colorless gas that is a byproduct of combustion. Readings greater than nine parts per million are potentially dangerous and should be investigated further by professionals. Here are some do's and don't's for carbon monoxide exposure:

Do

- Have gas or oil appliances serviced by a qualified technician every year
- Only purchase equipment approved by a national testing lab such as Underwriters' Laboratories
- Install a battery operated CO detector and change batteries when you change clocks in spring/fall
- Have your chimney cleaned yearly by a professional service company
- Ensure the damper of your fireplace is open prior to lighting

Don't

- Run your car inside of your garage, even if you leave the overhead door open
- Heat your house with a gas oven or stove burners
- Use a generator inside your home, garage, or directly near an exterior window
- Use your barbeque grill indoors or near an exterior window (sounds funny, but you'd be amazed).

The most common symptoms for carbon monoxide exposure are weakness, headache, nausea, vomiting, dizziness, confusion, and chest pain. If you are experiencing any of these symptoms and suspect that carbon monoxide could be the culprit, then immediately exit the area to fresh air and call 911. **DO NOT RE-ENTER THE AREA FOR ANY REASON.**

Take a little extra time and endeavor to keep you and your family from becoming victims of carbon monoxide exposure.



**THE MARK OF
QUALITY.**

Kriegshauser West Mortuary

9450 Olive Blvd.

St. Louis, MO 63132

314-994-3322

www.dignitymemorial.com

JANUARY MEMBERSHIP MEETING



Luncheon speaker, Mike McCarthy of the St. Louis Blues (left) talks with Chris Pickel (AT&T).



from left: Amy Kunes (California Pizza Kitchen), Teesha Maupin (California Pizza Kitchen), Tiffany Short (California Pizza Kitchen), Michelle Becher (SLA Services), JoAnn DeRousse (Mulqueeny Eye Centers) and Jacalyn Keene (First National Bank of St. Louis).



From left: Jodi Meracle (RAI Insurance) waits as she is introduced by Phyllis Messerla (AMG Corporate Offices) as the new Vice President of Membership on the Board of Directors for the Chamber.



Chamber Of Commerce

You are cordially invited to the 14th Annual

BUSINESS EXPO

TUESDAY, MARCH 27, 2012

4:00 - 6:30 p.m.

Jewish Community Center

Arts and Education Building (Carl and Helene Mirowitz Performing Arts Center)

2 Millstone Campus Drive

St. Louis MO 63146

No charge to attend

Booth guidelines: Set up begins at 3:00 p.m. and must be completed by 4:00 p.m. Booths are 6' and 8' and priced accordingly. Cash sales are allowed but exhibitors must check on having a valid license to sell. All display materials must be removed following the expo. Booths requiring electric will be placed accordingly. Please do not plan to break down display until the end of the event. Any additional needs may be addressed by calling the Creve Coeur-Olivette Chamber office.

\$600 MAJOR SPONSORS RECEIVE: Double Booth (two tables in premium location), name recognition in all printed materials, logo used in event signage and program, and use of sponsor's banner displayed at event

\$300 SUPPORTING SPONSORS RECEIVE: Single Booth (table in preferred location), name on event signage and logo in program.

\$150-200 EXHIBITORS RECEIVE: Booth and Name in event program

ATTENDANCE & BOOTH REGISTRATION REGISTRATION FOR BOOTHS IS ON FIRST-COME BASIS

Company _____

Contact Name _____

Address _____ City _____ Zip _____

Phone _____ Fax _____ e-mail _____

Sign me up for the following:

____ Major Sponsor @ \$600

____ Supporting Sponsor @ \$300

____ \$150 Exhibitor (6' table - 10 available)

____ \$200 Exhibitor (8' table - 40 available)

____ Electric (\$35)

I will bring the following item(s) to give away at the event _____

Food or beverages being served by restaurant _____

\$ _____ Total registration costs

For credit card payment:

Card number _____

Expiration date _____ 3 digits on back of card _____

Name on credit card _____

Street address where credit card bills sent _____

zip code _____

For more information contact the Creve Coeur - Olivette Chamber of Commerce at 314-569-3536.

Make checks payable to Creve Coeur-Olivette Chamber of Commerce.

Mail registration form with payment to:

10950 Olive Blvd., Suite 101, Creve Coeur MO 63141

OR FAX COMPLETED FORM TO: 314-569-3073



Chamber Of Commerce



27th ANNUAL CORPORATE CHALLENGE GOLF TOURNAMENT

Tuesday, May 22, 2012

Landings at Spirit Golf Club

180 N. Eatherton Road, Chesterfield
636-728-1927

**Register Early
and Save**

11:00 a.m. Registration & Driving Range open

12:00 p.m. Shotgun Start

Driving range, box lunches, dinner & beverages included with registration fee

- \$1,000 GOLD SPONSORS:** Foursome of golf, mulligans, skins, putting contest, ¼ page ad in Chamber's July newsletter, and recognition in golf program
- \$900 SILVER SPONSORS:** Foursome of golf, mulligans, skins, putting contest and recognition in program and newsletter.
- \$750 BRONZE SPONSOR:** Foursome of golf, mulligans, recognition in program and newsletter
- \$400 FOURSOME:** Team of four golfers
- \$360 foursome for Early Bird Special (must be received at Chamber office by 5:00 p.m. March 16)**
- \$100 Individual player**

Other sponsorship opportunities:

- | | |
|--|---|
| <input type="checkbox"/> \$100 Hole Sponsor | <input type="checkbox"/> \$250 Hole In One Sponsor |
| <input type="checkbox"/> \$135 Hole Sponsor (with display on hole) | <input type="checkbox"/> \$250 Putting Contest Sponsor |
| <input type="checkbox"/> \$500 Lunch Sponsor | <input type="checkbox"/> \$250 Closest to the Pin Contest Sponsor |
| <input type="checkbox"/> \$600 Dinner Sponsor | <input type="checkbox"/> \$250 Straightest Drive Contest Sponsor |
| <input type="checkbox"/> \$250 Longest Drive Contest Sponsor | <input type="checkbox"/> \$250 Beverage Cart Sponsors (sold out) |

- I would like to donate a goody bag item.
- I would like to volunteer the day of the event.

REGISTRATION INFORMATION

TEAM CAPTAIN NAME _____ BUSINESS _____

CITY _____ STATE _____ ZIP CODE _____

PHONE _____ FAX _____ EMAIL _____

My foursome includes:

Cart 1 _____

Cart 2 _____

_____ Total amount due

_____ Charge to: Visa / MC / Discover Card # _____ 3 digit code _____

Exp. Date _____ Card holder signature _____

Address and zip code to which credit card bills are mailed: _____

Please mail with check to the Creve Coeur - Olivette Chamber of Commerce, 10950 Olive Blvd., Suite 101, Creve Coeur MO 63141 or e-mail to ngray@ccochoamber.com or fax to 314-569-3073.

For more information call the Chamber office at 314-569-3536.



Chamber of Commerce

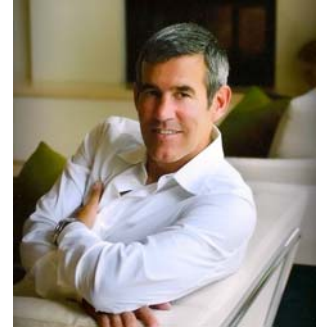
MEMBERSHIP LUNCHEON THURSDAY, FEBRUARY 16, 2012

11:15 a.m. Registration & Networking
11:45 a.m. Lunch & Program

SPAZIO - WESTPORT



12031 Lackland Road, Maryland Heights
314-576-0400



SPEAKER: BILL DONIUS

TOPIC: HOW TO UNLOCK YOUR INNER GENIUS TO TAP INTO CREATIVITY AND INTUITION

In the workplace, we are often asked to think differently or "to think outside the box". These clichés can often ring hollow. They could, as well, have asked us to disappear or perform some other miracle. How exactly are we supposed to think differently? Former bank CEO and facilitator, Bill Donius, deploys a methodology he has used for over twelve years, originating from Roger Sperry's ground breaking, Nobel Prize winning research about the independence of consciousness between the left and right hemispheres of the brain. Donius conducted research with hundreds of interview subjects over the past three years that resulted in the book, *Thought Revolution: How to Unlock the Genius Within* (Changing Lives Press, release date March 2012). Bring a writing utensil, paper and an open mind. Learn how to think differently – REALLY!

Bill Donius attended Tulane University and the A.B. Freeman School of Business and the Kellogg School at Northwestern University then spent the next thirty years working in both California and Missouri in the corporate world in the areas of management consulting, public relations, health care, television production and banking. At age 50, Donius left his position as Chairman and CEO of Pulaski Bank in order to devote full time energies to his passions of writing, serving on community boards and advocating for human rights issues.

RESERVATIONS BY FEBRUARY 13, 2012

REGISTER ONLINE: www.ccochamber.com OR FAX: 314-569-3073

OR E-MAIL: ngray@cco chamber.com

Chamber office phone: 314-569-3536

No cancellations after November 14th.

\$22 for members, non-members and guests with reservations. No shows are billed \$22.

May pay by cash/check/Visa/MC/Discover

Name _____

Name _____

Company _____

Daytime phone _____ e-mail _____

CCO Coffee Connection

This free event gives you a chance to connect with others in an informal networking setting!

Bring lots of business cards and be prepared to share your business story!

Friday, February 10, 2012

8:00-9:00 a.m.

Light Breakfast Items & Networking

Doctors Express

747 N. New Ballas Road

Creve Coeur, MO 63141

314-991-3030

NO CHARGE but kindly RSVP for food count

Phone: 314.569.3536 Fax: 314.569.3073

10950 Olive Blvd., Suite 101

Creve Coeur, MO 63141

www.ccochamber.com

Please RSVP by noon on February 9, 2012

REGISTER ONLINE: www.ccochamber.com or FAX: 314-569-3073

OR E-MAIL: ngray@cco chamber.com

Name of attendees _____

Business _____

Daytime phone _____